
HSAjet TCU Setup Guide

**Follow this guide to setup your TCU unit
Please also see "TCU quick start" for
message design process
(supplied on CD)**

Important

Congratulations on your new TCU. You have purchased a simple-to-use unit that still provides you with great flexibility in your marking needs.

To care for the unit some precautions have to be taken. Please follow these carefully:



Observe what voltage the TCU is made for. Correct voltage is written on the sticker next to power connector. Never supply different voltage.



Do not do any of the following while the machine is turned on

- Take out compact flash card
- Disconnect cables to print heads



It is recommendable to store cartridges while not in production in airtight container with the supplied plastic tape mounted on nozzles, to prevent dry-out.

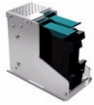
Unpack the equipment

You need the following to print with a TCU



TCU Unit.

This may be with or without display



Print heads (stalls)

One or two HP stalls, can be configured as double or single



Compact flash card

A normal Compact Flash card, 32 to 256 Mb, should be formatted in FAT



Start sensor

Photoelectric or proximity switch to detect product



Ink Cartridge

A series 45 compatible ink cartridge. Can also be part of the bulk system.



Power cable

Normal power cable with ground.



Compact Flash reader / writer

To transfer layouts created on a PC / laptop, to the CF card

The following parts are optional



Terminal / print selector switch

To choose messages on TCUs without display



Encoder

For accurate measurement of speed.

Connect the TCU

Connect HP stall(s) using the 25 pin cables to Head 1 and Head 2

Insert ink cartridge(s) into the stall(s) and lock them

Connect the start sensor to I/O.

Please consult TCU manual for connection of wires if you were not supplied with a complete unit

Connect power cable



Notice that your unit does NOT work without a CF card inserted.
This card MUST

- Be formatted in FAT (FAT-32 and NTFS will not work)
- Have TCU system files and at least 1 layout on the card.

Optional equipment:

Connect the encoder to ENCODER connector.

Please refer to wiring diagram in TCU manual if not mounted with connector

Connect terminal / message selector, to COM 2

Once all is connected, you can prepare the CF card with the message(s).

Make a sample print

- Look on the supplied CD in the directory for sample files
 - Copy all the files in this directory to your compact flash card.
 - Eject the card
(Windows 2000 / Windows XP: select "Eject" from Windows Explorer)
 - Insert the card in your TCU
 - Turn on power
-

TCU without switch / terminal:

- Press RED button to start print mode. Only first file transferred to the card can be used. Make sure only one layout is present.

TCU with selector switch:

- Turn switch to position 11 or 12
- Press RED button to start print mode

TCU with terminal / Integrated TCU:

- Select the file using arrow keys and press Enter to load
 - Press start print button on terminal, or RED button on TCU to start print mode
-

- Activate the start sensor and see a print.
Sample files work without encoder, at 15 or 20 m/minute