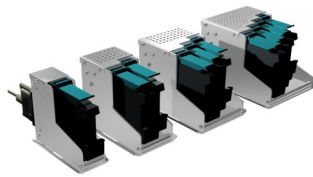


CT-TOUCH™



0.7" Tall



Each Stall 0.5" Tall



inkjet
technology by



HSAjet

High resolution
industrial inkjet printers

CT-TOUCH is a high resolution touch controller, connected to our standard printers and HP print heads, the CT-Touch™ functions as a stand-alone system. The CT-Touch™ is an advanced and high-resolution printing solution with multiple printing possibilities.

- Integrated MicroTouch™ touch monitor from 3M
- High contrast 15" TFT LCD touch panel
- Robust stainless steel enclosure
- Environmentally safe
- Windows 10 64 bit

Tomorrows Technology Today

CT-TOUCH™

Software Features		CT-Touch™ XJ128 +	CT-Touch™ HP
text printing		yes	yes
max. number of text-fields		unlimited	unlimited
text length (characters)		255	255
logo printing		yes	yes
counter printing		yes	yes
barcode printing		yes	yes
max. number of barcodes		unlimited	unlimited
time & date printing		yes	yes
database / mail function		yes	yes
form printing		yes	yes
multiple fonts		yes	yes
message creation from template (prompt)		yes	yes
Performance			
max. number of messages		unlimited	unlimited
max. message length (mm)		8,900	2750
max. print height (mm)		280 mm per card	50.8 per card
print speed (m/min)		35	30 (600 dpi)
drop size (pL)		80	40
inks		Oil, solvent	Water, UV cured
ink System (bulk capacity available)		500 ml bottle	42 ml cartridge
max. resolution (dpi)		185	600 x 600
memory capacity (GB), Ram (MB)		40, 512	40, 512
Pentium Processor / Windows XP Pro		yes	yes
max. controllable print heads		16 x XJ128	12 total, 4 x HP
print head cable length		per card 25'	per card 10'
Technology			
piezo		x	
thermal			x
Printing Orientation			
side-to-side / from-up-to-down		yes	yes
distance to print surface, max.		3 mm	3 mm
distance to print surface, min.		0.5 mm	0.5 mm
Screen Interface			
15" TFT, Active Matrix with MicroTouch™ ClearTek™ II capacitive touch screen technology. Contrast ratio 500:1		yes	yes
Interface			
RS232		yes	yes
Ethernet 10/100			
USB (4 ports)		yes	yes
Inputs/Outputs			
product sensor ("-" or "+" edge)		1 per card	1 per card
Encoder (5V or 24V, quad or position)		1 per card	1 per card
Mechanical Dimensions			
Width x Depth x Height - controller		16" x 15" x 16"	16" x 15" x 16"
Power Supply			
internal voltage (V)		Internal 350 W 115 / OPT 220	Internal 350 W 115 / OPT 220
frequency (Hz)		50 / 60	50 / 60
Environmental Conditions			
operating temperature range (°C)		10 - 40	10 - 40
humidity (%)		10 - 90 non-condensing	10 - 90 non-condensing
Warranty			
equipment		1 year	1 year
service (minimum)		5 years	5 years

Distributed By:



HSAUSA, LLC
 150 William Street
 Perth Amboy, NJ 08861
 1-800-298-8936
 Phone 732-324-0800
 Fax 732-324-4488
 Email: info@hsausa.com
 www.hsausa.com