



# PRODUCT OVERVIEW

PRODUCTS BASED ON HP INKJET TECHNOLOGY TIJ 2.5  
& ACCESSORIES

<b>HSAJET<sup>®</sup></b> High resolution industrial inkjet printers	Inkjet Technology 
--	---

**HSA**  **USA**  
The first choice in package printing.

  
**HSA** A UNIQUE IMPRINT  
SYSTEMS

# HSAJET® CONTROLLERS

## MINI SERIES

### MCHP1 Micron (1/2")

The print job is designed on a PC, then transferred to Micron via USB stick. The Micron is ideal for repeat print jobs using same layout. When changing to a new job USB is inserted and job transferred. Prints counters, date/time, fixed text, logos and barcodes.

### MKHP MiniKey (2")

A compact unit integrated keyboard and icon based colour monitor. Runs with up to 1" print head mounted directly on the controller and up to 1" mounted remotely via a cable. The unit can be controlled remotely via Ethernet or Serial connection. Jobs are made directly on the unit or on a PC and transferred via USB or Ethernet. The MK can print several different barcodes with variable content. Prints counters, date/time, fixed text, shift codes, variable barcodes, graphics.

### MTHP4 MiniTouch (2")

The MiniTouch is controlled from an intuitive icon based built-in 5.7" touch monitor. The unit can be controlled remotely via Ethernet or Serial connection. It can handle up to 2" print height in combinations of 0,5" up to 2" heads. Jobs can be created directly on the unit or on a PC. Prints counters, date/time, fixed text, from text-list, shift codes, variable barcodes, graphics. Available for both F-type and Premium printheads.



## CUF SERIES

### TCUF Tiny Controller (1")

The TCUF can run with either 2 individual printheads each of 1/2", or a single 1" head. Jobs are designed on PC and transferred via CF card. Switching between jobs on CF card is done via an optional job selector box or optional terminal. Prints counters, date/time, prompted text, fixed text, graphics, fixed barcodes.

### TCUF-int Tiny Controller (1")

The TCUF-int has same features as above, but with integrated keyboard/display, which allows direct access to e.g switching between different print jobs, as well as making layout changes directly on the unit.

### CUF Controller Unit (2")

The CUF can work with a combination of printheads up to 2" print height. Compared to the TCUF's the CUF can handle more fields and print some barcodes with variable content, as well as being remotely controlled via Ethernet or serial connection. Jobs are made on a PC and transferred via CF card. Prints counters, date/time, prompted text, fixed text, graphics, variable barcodes.



## FLEXIBLE SYSTEMS

### TIPC15 Touch Controller (2")

The TIPC15 handles any kind of print job, including print from database as well as remote communication via Ethernet and Serial connection. The jobs are made directly from the 15" touch screen and the unit controls any combination of print heads up to 2". Prints variable text, counters, date/time, shift codes, graphics, all barcodes. Available for both F-type and Premium printheads.

### OPC (4") / RPC (8") / CBF (2") / CB6e (8")

Our flexible solutions with controller board, either ready to run or for integration. Prints from databases SQL/ODBC, Access, Excel, CSV/text files.



# INK & PRINTING

## HSAJET® Premium Printheads w HP TIJ 2.5 technology

- Premium printheads are as standard available with 1, 2, 3, 4, 6, 8 or 10 pens (½"-5")
- For use with the Premium series of printer controllers
- Reversible footplate for left and right travel of products
- Keypad with LED low ink signal and reset button on each head

PREMIUM 1PEN



PREMIUM 3PEN



PREMIUM 4PEN



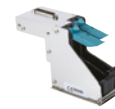
## HSAJET® F-type Printheads w HP TIJ 2.5 technology

- Printheads available in different configurations: top/down, side & side/low as 1, 2, 3, 4, 6 and 8 pens (½"-4")
- Printheads can be combined in other configurations on special footplate/sole for integration purposes
- CMYK printheads for colourprints ½-1" print height

HP 2PEN (TOP)



HP 2PEN (SIDE)



HP 2PEN (SIDE/LOW)



# ACCESSORIES & INKS

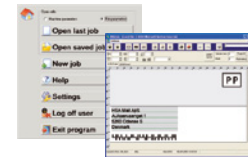
## HP and HP Partner inks for HP TIJ 2.5

- HP ink cartridges & bulks for industrial use
- Collins Inkjet's full range of ink cartridges & bulks: black, colour, security and special inks
- General ink cartridges & bulks
- ImTech ink cartridges & bulks



## Printing software & Accessories

- OBJ InkDraw - Mail InkDraw - Print & verification software
- MiniDraw - MicroDraw (PC software)
- Bridges, headmounts, brackets for mail tables
- Vision system, sensors, encoders



# MOVING & PRINTING

## Desktop Printer Conveyors

- Powerful, reliable and precise product transport
- Feeder extension table
- Variable speed
- High-speed - up to 90 m/min (22.000 C5-sheets/hour)
- Optimum encoder reference

HS 600



HS 600 W/FEEDER



## Mail Tables

- Powerful, reliable and precise product transport
- Available in 2 sizes, 1000 & 1500 mm long
- Variable and fixed speed
- High speed – up to 250 m/min
- Optimum encoder reference

HS 1500



HS 1000



## Streamfeeder

- A wide variety of feeders available for mail processing equipment, as well as the graphical and packaging industries
- Series: Value – Reliant – Pro – Servo



## Turnkey Printing Solutions and Integration Kits

Our high resolution inkjet printers are used for printing variable and fixed information onto a wide range of products within the Coding & Marking and Commercial Printing markets.

Our objective is to provide customers with standard equipment or specially adapted solutions for integration purposes, to meet specific requirements.

To complete systems and integrations, HSA Systems offers a range of industry related products including print and verification systems, vision systems, transport units, feeders and supplies.

The equipment is available through a global distributor and integrator network.

See detailed product flyers for more information.



HSAJET® PRINT & VERIFICATION SYSTEM

## TECHNICAL SPECIFICATIONS

Code	Controller Type	Max Print height	Full database connectivity	Dim L x W x H (mm)
MCHP1	MICRON	½"	NO	72 x 90 x 112
MKHP4	MINIKEY	2"	NO	187 x 102 x 106
MTHP4	MINITOUCH	2"	NO	145 x 135 x 40
TCUF	TINY CONTROLLER UNIT	1"	NO	220 x 145 x 65
TCUF-INT	TCU W INTEGRATED KEYBOARD	1"	NO	220 x 145 x 72
CUF	CONTROLLER UNIT	2"	NO	210 x 155 x 90
TIPC15	TOUCH INDUSTRIAL PRINTER CONTROLLER	2"	YES	372 x 303 x 110
OPC	OFFICE STYLE PRINTER CONTROLLER	4"	YES	420 x 200 x 420
RPC	RACK STYLE PRINTER CONTROLLER	8"	YES	450 x 439 x 177
CBF	CONTROLLER BOARD FOR INTEGRATION	2"	YES	254 x 138 x 23
CB6e	PREMIUM CONTROLLER BOARD	8"	YES	159 x 122 x 20

Vertical resolution (DPI)	Horizontal resolution 75-2400 DPI (variable)* speed examples (m/min)			
	75 DPI	300 DPI	600 DPI	2400 DPI
600 DPI	304	76	38	10
300 DPI high speed	608	152	76	19
300 DPI (row A)	304	76	38	10
300 DPI (row B)	304	76	38	10

\*) Not applicable to TCUF, TCUF-INT and CUF.  
See detailed product flyers for more information.



HSAUSA LLC  
150 William Street, Perth Amboy, NJ 08861  
Tel: 732-324-0800  
Fax: 732-324-4488  
sales@hsausa.com  
www.hsausa.com



HSA Systems (head offices)  
DENMARK | SKOVUNDE +45 4494 0222 | ODENSE +45 6610 3401

HSA Systems (subsidiary offices)  
FRANCE +33 1 4815 5050 | GERMANY +49 5257 938 6777

www.hsasystems.com | mail@hsasystems.com